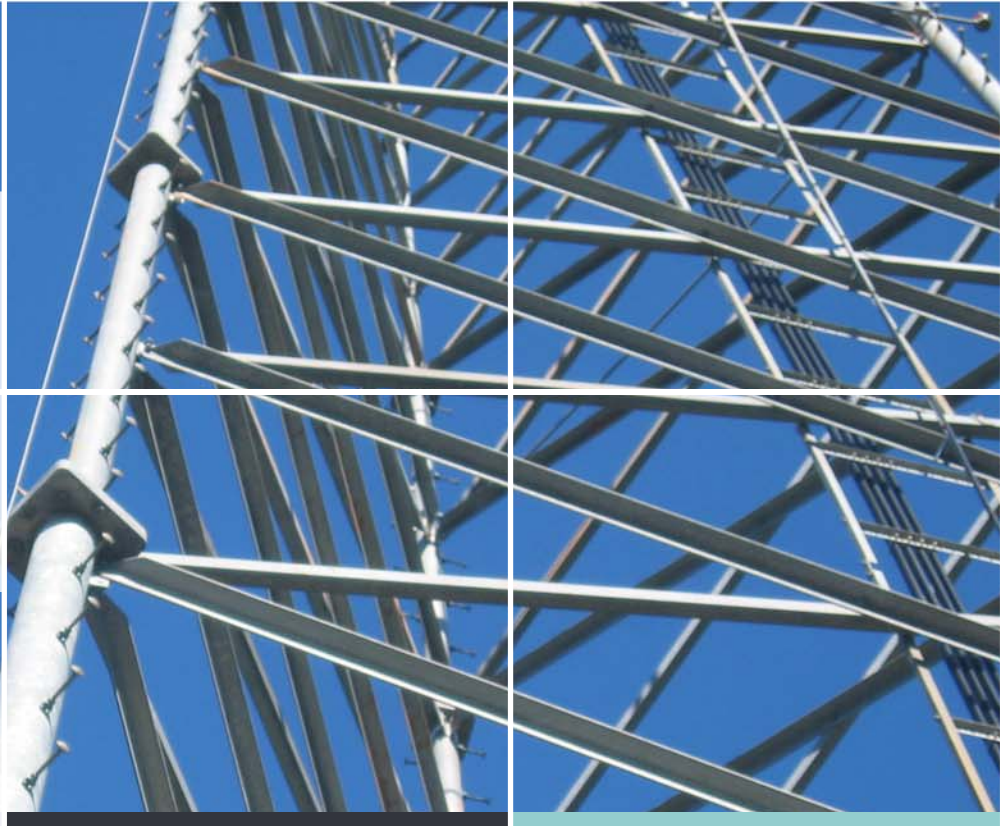


Metropolitan Area Network

The School District of Escambia County



In this issue:



Panama City Beach
students head back to
new school

Page 2



Einstein and DaVinci
find a home

Page 2



Photo of the Month:
SCG has gone to the
dogs

Page 3

The Network is up and running:

Over the past 5 years, the School District of Escambia County has extensively restructured their wide area network to provide a fiber optic and wireless network completely free of local service providers and their recurring costs. Prior to 2002, the District's network consisted of 71 different sites which all had to pay monthly recurring fees to local service providers. These fees totaled over \$450,000 per year. The speeds of this network varied from 256kbps (kilobits per second) to 16Mbps (megabits per second). The low bandwidth of these connections effectively limited useful access of educational tools to students.

The final phase of the project has just recently been completed and now all of the District's sites are connected with approximately 65 miles of fiber optic cabling running Gigabit Ethernet (1 Gbps) or high-speed wireless connections (at 43 to 220 Mbps). Many of the sites are also connected to each other via wireless connections to provide further redundancy in the network.

The district is now free of recurring service provider costs for their data services and provides nearly 100 times the speed of its previous network, all while spending a fraction of the previous cost on maintenance.

Throughout the past 5 years, Schmidt Consulting Group has provided feasibility studies, life cycle cost analysis consulting, conceptual design, wireless link path analysis, outside plant fiber optic design, detailed construction document design, wireless tower structural design, and right-of-way permitting for the School District's new Metropolitan Area Network.



Photo Courtesy of JRA Architects, Inc.

Panama City Beach students head back to new school:

The new Breakfast Point Academy, located on Panama City Beach, Florida, opened its doors last month to students grades Pre-K through 6. The Academy, designed to serve grades Pre-K through 8, will welcome 7th graders next fall and 8th graders the year after.

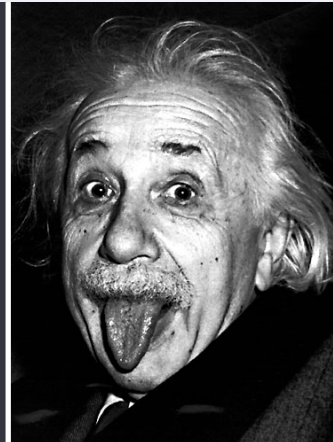
Breakfast Point Academy is located on 40 acres. The school's name reflects the history and geography of an area just north of the school where there is a cape in West Bay of the same name. The St. Joe Company donated the land to Bay District Schools and plans to develop a "Breakfast Point" community adjacent to the school.

Schmidt Consulting Group, Inc. was chosen by JRA Architects to provide Mechanical, Electrical, Plumbing, and Communications design services for the Academy.

The \$29.7 million, 165,000 square foot school consists of an "H" shaped main building with a detached, 20,000 square foot gymnasium. The center core of the building houses the administration suite, media center, covered play area, shared ESE and Skills labs and art suite. All elementary classrooms are located in the rear of the school which allows for segregation of middle school and elementary populations.

The school is equipped with 44 elementary classrooms, each with a bathroom and storage area. At full capacity, the school can hold 1,200 students. Features of the Academy include three computer labs, three science labs, a band room, an enclosed middle school wing, a cafeteria with large stage, and a state-of-the-art-media center with research centers. Future plans include the addition of a softball field, a football field, and tennis courts.

Einstein and Da Vinci find a home: Construction has just been completed on infrastructure enhancements at two facilities for the Naval Oceanographic Office Major Shared Resource Center (NAVO MSRC). Schmidt Consulting Group, Inc. along with Dell Consulting, and Lockheed Martin Space Operations provided engineering, construction administration, and commissioning services for the Technology Insertion - FY 2008 project. The MSRC is located within the NAVO facilities at the John C. Stennis Space Center in southern Mississippi and operates as a DoD shared High Performance Computing (HPC) resource. This facility provides DoD scientists and engineers with advanced HPC resources including vector systems, scalable parallel systems, clustered workstations, data storage and archiving, and scientific visualization resources.



Einstein and Da Vinci

This project prepares the MSRC for the arrival of an 80 Teraflop IBM P6 cluster called DAVINCI and a 117 Teraflop CRAY XT5 cluster named EINSTEIN. The addition of these powerful systems will quadruple the NAVO MSRC computational capacity by the close of 2008. EINSTEIN and DAVINCI will be joining BABBAGE and PASCAL in providing an aggregate 233 Teraflops of computational capability.

One of the MSRCs more recognizable work products is the Navy Operational Global Atmospheric Prediction System (NOGAPS) atmospheric model. This model provided the most accurate five-day prediction of Hurricane Katrina, the eye of which, ironically, passed directly overhead of the MSRC facility. To learn more about this and other atmospheric models used by meteorologists to predict storm tracks check out: <http://www.nhc.noaa.gov/modelsummary.shtml>

Photo of the Month



From left: Jeremy Hayes and Puppy No. 1, Erica Almanza and Puppy No. 2, Karin Sheridan and Niki, Stefanie Hughes and Puppy No. 3, and Jason Worrell (of Sam Marshall Architects) and Tiki.

SCG has gone to the dogs: Babies were just not enough - we had to up the cute factor and throw some puppies in the mix too.

Last week, Jeremy Hayes (featured lower left) brought in his four Malamute/Blue Heeler mix puppies for us all to snuggle with. Karin Sheridan - supreme animal lover who can never turn away an homeless animal - adopted one of the pups and named her Niki (both featured center). Niki has officially joined the downstairs kennel, along with her pals Tiki (featured lower right) and Kira.

But we aren't hogging all the fun....we share with our neighbors. The crew at Sam Marshall Architects regularly check-out the puppies for a fur-filled hour or two.

****Jason Worrell (featured lower right) swears that the choke-hold he put Tiki in is approved by the World Wrestling Foundation and is not inhumane.*



Locations:

Pensacola Office:
139 East Government Street
Pensacola, FL 32502
P: 850-438-0050 | F: 850-432-8631

St. Petersburg Office:
2111 Dr. Martin Luther King Jr. Street N.
St. Petersburg, FL 33704
P: 727-822-6286 | F: 727-822-6280

Daphne Office:
29000 Highway 98 | Building A, Suite 201
Daphne, AL 36526
P: 251-625-3003 | F: 251-625-3020

www.schmidtconsultinggroup.com

About Us: Schmidt Consulting Group, Inc. was established in 1987 to provide Mechanical, Plumbing, Electrical, Communications, and Structural design services to a very diverse client base.

Headquartered in Pensacola, Florida, SCG currently employs branch offices in St. Petersburg, Florida and Daphne, Alabama to serve our clients more effectively and efficiently.

Our range of consulting services includes planning, design, the production of construction documents, supervision of public bidding, contract administration, and supervision and inspection during construction.

Our reputation for quality, responsiveness, and timeliness has been demonstrated through successful projects for many private, federal, state, and local entities.

Schmidt Consulting Group, Inc. has provided specialized design solutions for a variety of facility types including: Airports, Auditoriums, Broadcast Studios, Churches, Colleges and Universities, Correctional Facilities, Data Centers, K-12 Schools, Hospitals and Healthcare Facilities, Industrial Complexes, Laboratories, Libraries, Military Facilities, Multi-Family Residential Units, Municipal Facilities, Museums and Performing Art Centers, Office Buildings, Recreational Facilities, Sport Complexes, and Wastewater Treatment Plants.