

November 2011 NEWSLETTER | VOL. 37



*“Lagoon Landing” Student Housing, Florida Keys Community College , see pg. 2 for details*

## What’s Inside:

Lagoon Landing	Page 2
Oh Baby!	Page 2
Changes at SCG	Page 3
Thanksgiving Celebrations	Page 4
About Us	Page 5

## Lagoon Landing



Schmidt Consulting Group, Inc. in coordination with Florida Keys Community College, Hayes Cumming Architects, and Student Suites provided design services for the new \$4.8 million, three-story, 43,000 square foot new Student Housing Facility at Florida Keys Community College.

The new facility, known as *Lagoon Landing*, was designed to include 20 typical units and 4 atypical units. Each typical unit contains four bedrooms, two baths, a common living area, and a kitchen area.

The atypical units were designed to contain five bedrooms. In addition, *Lagoon Landing* will house a living unit for the residential manager and feature several added amenities. Such amenities include an exercise room, study rooms, secured covered parking under the building, central laundry services, a meeting/seminar room, and outside barbeque/student gathering area with picnic tables. Some of the buildings communications designs included a key-less main exterior entry, security cameras, and WiFi throughout the facility.

Schmidt Consulting Group, Inc. provided Mechanical, Electrical, Plumbing, Security, and Telecommunication engineering services for the new facility, which opened in August 2011 for the Fall Semester.

Rendering provided by Student Suites

## Oh Baby!



SCG would like to congratulate our very own Anton Lie and his wife Jennifer on their first baby, Olivia Marie. Olivia was born Saturday, November 19, 2011 at 2:33 in the afternoon. At 6 lbs., 9.1 oz. Olivia has given the Lie family something to be truly thankful for this year.

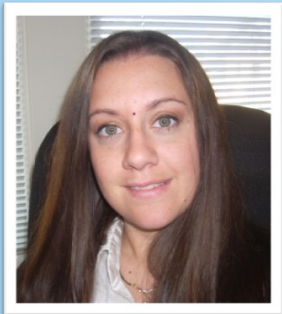
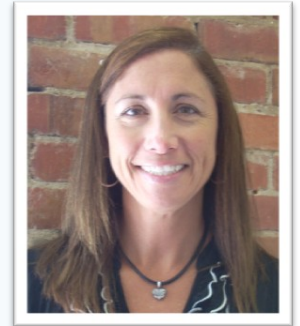
Our most heartfelt wishes go out to Anton and Jennifer as they begin this exciting new journey together.

	<b>Amount/Serving</b>	<b>%DV</b>	<b>Nutrition Facts</b> Serving Size: One Adorable Baby 
	Arrived.....	November 19, 2011	
	Time.....	2:33 PM	
	Weight.....	6 lbs. 9.1 oz.	
	Length.....	19 inches	
	Birthplace.....	Pensacola, FL.	
Ingredients: Ten little fingers, ten little toes, two beautiful eyes and a cute button nose.			



## Changes at SCG

Schmidt Consulting Group would like to welcome our newest team member, Maureen Costlow. Ms. Costlow, a Los Angeles, California native, joined us last month as our new Administrative Assistant. Ms. Costlow graduated from San Diego State University with a Bachelors Degree in Urban Geography and has made a great addition to our team. Ms. Costlow will be handling the front desk operations and submittal distributions.



Tamara Arora has been promoted to the position of Marketing Director and Project Coordinator. As Marketing Director, Ms. Arora will be working on Proposals, Event Planning/Coordination and Public Relations, as well as the design and production of SCG company brochures, newsletters, and portfolios. As a Project Coordinator, she will be coordinating review items with in-office staff, clients, and architects, scheduling meetings and jobsite visits, and assisting with the preparation of contract documents.

William Joseph Jones was promoted to the position of Associate Vice President in recognition of his hard work and dedication to the firm. Mr. Jones began working at SCG five years ago and has over fourteen years experience as a mechanical engineer. Mr. Jones holds a Bachelors degree in Mechanical Engineer from Mercer University, and a Masters in Business Administration from the University of West Florida. In addition to his promotion, Mr. Jones recently completed his LEED BD+C accreditation with the United States Green Building Council.



## SCG Makes Their Move

Schmidt Consulting Group would like to inform everyone that our St. Petersburg office will be moving to a new location. The new office location will be:

2210 Central Avenue  
St. Petersburg, Florida 33713

Relocation should be completed by December 5, 2011. All future items for this office should be addressed to this location. SCG requests that any submittal items be mailed to the main office in Pensacola, unless these items are specifically for review by Eric Eldridge.



## Thanksgiving Celebrations

This year Schmidt Consulting Group celebrated Thanksgiving with food, friends, and fellowship. A lot of changes have happened in the last year and SCG wanted a chance to get reacquainted with our local architectural firms. After much planning, a Thanksgiving Luncheon was held, which included fried turkey from Jerry's Cajun Café and all the fixin's. SCG staff contributed most of the side items for the feast, which was well received by our guests.

Joining SCG for our Thanksgiving feast were architects from Bullock Tice Associates, Caldwell Associates, DAG Architects, Gulf Coast Architectural Group, HDR, Inc., Sam Marshall Architects, SMP Architecture, and STOA Architects. With a turnout of around fifty guests, this year's luncheon was a great success.

Often in day to day business operations there isn't time to get to know the people behind the work. Good business is the result of warm and successful relationships and celebrations like these allow for team members and clients to take the time to relax, laugh, and appreciate the relationships that we have with one another. In appreciation of our association throughout the year; we would like to send all of our Architects, Contractors, and Clients our gratitude and best wishes for a joyful holiday season and a prosperous new year.



*Top Left: David Alsop from Sam Marshall Architects strikes a pose with Berry Veney in SCG's Electrical Department.*

*Top Right: Gene Schmidt is encouraging everyone to try his delectable 'Nanner Pudding.' As you can see from this picture, Mr. Schmidt skipped right over the turkey dinner and went straight for desert!*

*Bottom Left: SCG team members were joined by Gulf Coast Architectural Group and STOA Architects for a friendly "roast."*

## About Us:

Schmidt Consulting Group, Inc. (SCG) was established in 1987 to provide Mechanical, Plumbing, Electrical, Communications, and Structural design services to a very diverse client base.

SCG currently employs a branch in St. Petersburg, Florida in a addition to our headquarters in Pensacola, Florida.

SCG's range of consulting services includes planning, design, production of construction documents, supervision of public bidding, contract administration, and supervision, commissioning, and inspection during construction.

Our reputation for quality, responsiveness, and timeliness has been demonstrated through successful projects for many private, federal, state, and local entities.

Schmidt Consulting Group, Inc. has provided specialized design solutions for a variety of facility types including: Airports, Auditoriums, Broadcast Studios, Churches, Colleges and Universities, Correctional Facilities, Data Centers, K-12 Schools, Hospitals and Healthcare Facilities, Industrial Complexes, Laboratories, Libraries, Military Facilities, Multi-Family Residential Units, Municipal Facilities, Museums and Performing Art Centers, Office Buildings, Recreational Facilities, Sport Complexes, Wastewater Treatment Plants, Fire Stations, and even Hyperbaric Chambers.

## Locations:

### Pensacola Office

40 S. Palafox Place, Suite 300

Pensacola, Florida 32502

P: 850.438.0050 | F: 850.432.8631

### St. Petersburg Office Branch

2210 Central Avenue

St. Petersburg, Florida 33713

P: 727.822.6266 | F: 727.822.6280



Visit us online at [www.schmidtconsultinggroup.com](http://www.schmidtconsultinggroup.com)!