



*Santa Maria Del Mar, see pg. 2 for details—Rendering Provided by Eley Guild Hardy Architects*

## What's Inside:

Santa Maria Del Mar - Senior Living Community	Page 2
New Dormitory at Keesler Air Force Base	Page 3
Lake Pasadena Fire Station	Page 3
About Us	Page 4

## Santa Maria Del Mar - Senior Living Community

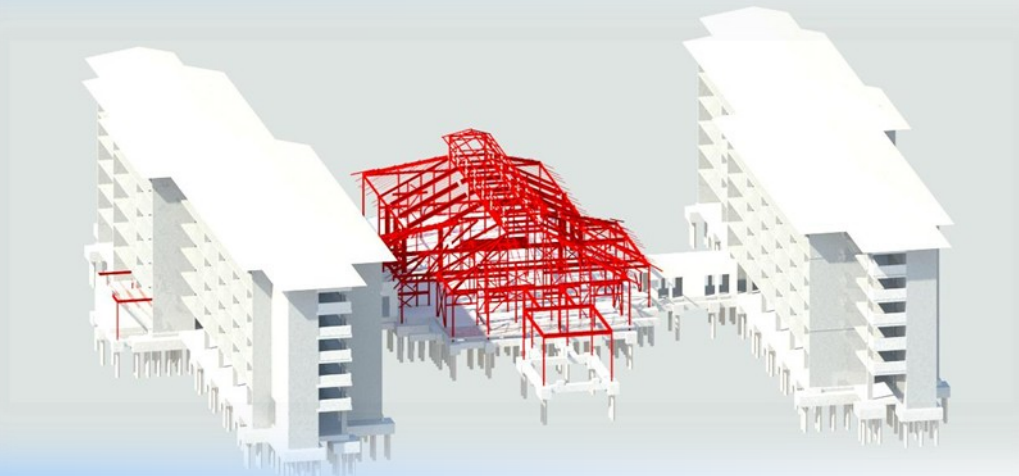


Six years after the destruction from Hurricane Katrina, construction is well underway on Biloxi's Santa Maria Del Mar Senior Living Community. The new 6-story facility will be replacing the previous 13-story facility sponsored by the Catholic Diocese of Biloxi. The new retirement facility has moved from its previous home near the Mississippi Sound and the Gulf of Mexico to a 10-acre site just south of Interstate 10 and out of hurricane flood zones.

The site will feature two 6-story towers to house 135 efficiency apartments and 74 one bedroom apartments. They will also include a two-bedroom manager's apartment and a central building for common areas. The central building will house support resources facilities, administrative offices, laundry rooms, kitchen, vending areas, an assembly room, lounges, a mail room, and public toilets.

After the previous facility received extensive flooding due to Hurricane Katrina and was deemed uninhabitable by FEMA, Mississippi received a \$29.2 million public assistance fund to rebuild the retirement community. Schmidt Consulting Group who is currently working on Mechanical, Electrical, Plumbing, Structural, and Telecommunications Design Services in coordination with Eley Guild Hardy Architectural is excited to see the foundation work being laid on this extensive project. The Santa Maria Del Mar Senior Living Community will serve as an income based housing facility for retirees who have been displaced for six years since the previous facility was destroyed.

*Revit Design by Schmidt Consulting Group*



## New Dormitory at Keesler Air Force Base

The new \$14.9 million permanent party personnel dormitory at Keesler AFB in Mississippi, is now in its final stages to meet the summer 2011 completion date. The dorms are scheduled to be turned over to the government in June to open its doors to single Airmen for permanent base housing.

The new 57,000 square foot dormitory consists of four three-story wings and will house 144 rooms. Each four-room module includes private bedrooms and bathrooms, and a common living space, kitchen, and laundry facility for the residents. The dorms, which are the first of four new permanent party dorms at Keesler also include a single-story commons building and an outdoor courtyard with recreational spaces.

Schmidt Consulting Group, in cooperation with Eley Guild Hardy Architects and Roy Anderson provided the Structural, Plumbing, Mechanical, Electrical, and Telecommunication design services for this LEED Silver project.

*Rendering provided by Eley Guild Hardy Architects  
Photo provided by Keesler AFB*



## Lake Pasadena Fire Station

Renovations to the Lake Pasadena Fire Station No. 9 located in St. Petersburg, Florida are nearing completion as contractors put the final touches on the painting and install air devices, electrical panels, and countertops.

The project included administrative, dormitory, and apparatus bay space and addressed various concerns for upgrades. As a result of the renovation, the apparatus bay was properly ventilated; three existing AHUs were replaced; a new generator was installed; lighting was updated with fluorescent T-8 lamps and exterior plumbing fixtures were removed. In addition, a new metal roof was provided; the kitchen was renovated, HID was provided for a new light pole and the communications closet was moved to the Mechanical Room to provide space for a new, main entryway.

Schmidt Consulting Group partnered with Hayes Cumming Architects provided the Mechanical, Electrical, Plumbing, and Fire Protection Design Services on this 8,500 square foot renovation project.

*Photo provided by Eric Eldridge, SCG*



## About Us:

Schmidt Consulting Group, Inc. (SCG) was established in 1987 to provide Mechanical, Plumbing, Electrical, Communications, and Structural design services to a very diverse client base.

SCG currently employs a branch in St. Petersburg, Florida in a addition to our headquarters in Pensacola, Florida.

SCG's range of consulting services includes planning, design, production of construction documents, supervision of public bidding, contract administration, and supervision, commissioning, and inspection during construction.

Our reputation for quality, responsiveness, and timeliness has been demonstrated through successful projects for many private, federal, state, and local entities.

Schmidt Consulting Group, Inc. has provided specialized design solutions for a variety of facility types including: Airports, Auditoriums, Broadcast Studios, Churches, Colleges and Universities, Correctional Facilities, Data Centers, K-12 Schools, Hospitals and Healthcare Facilities, Industrial Complexes, Laboratories, Libraries, Military Facilities, Multi-Family Residential Units, Municipal Facilities, Museums and Performing Art Centers, Office Buildings, Recreational Facilities, Sport Complexes, Wastewater Treatment Plants, Fire Stations, and even Hyperbaric Chambers.

## Locations:

### Pensacola Office

40 S. Palafox Place, Suite 300

Pensacola, Florida 32502

P: 850.438.0050 | F: 850.432.8631

### St. Petersburg Office Branch

2111 Dr. Martin Luther King Jr. St. N.

St. Petersburg, Florida 33704

P: 727.822.6266 | F: 727.822.6280

Visit us online at [www.schmidtconsultinggroup.com](http://www.schmidtconsultinggroup.com)!

